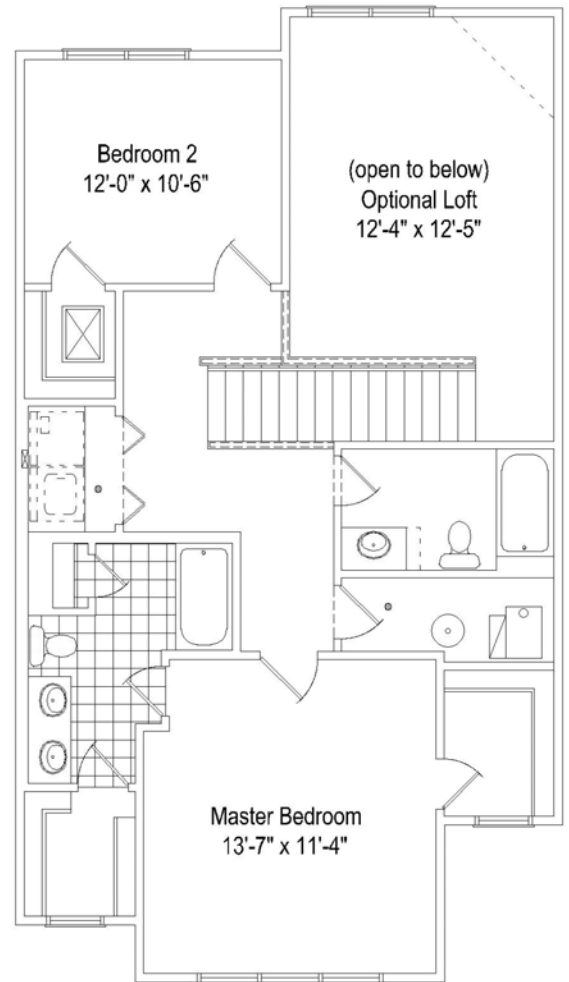
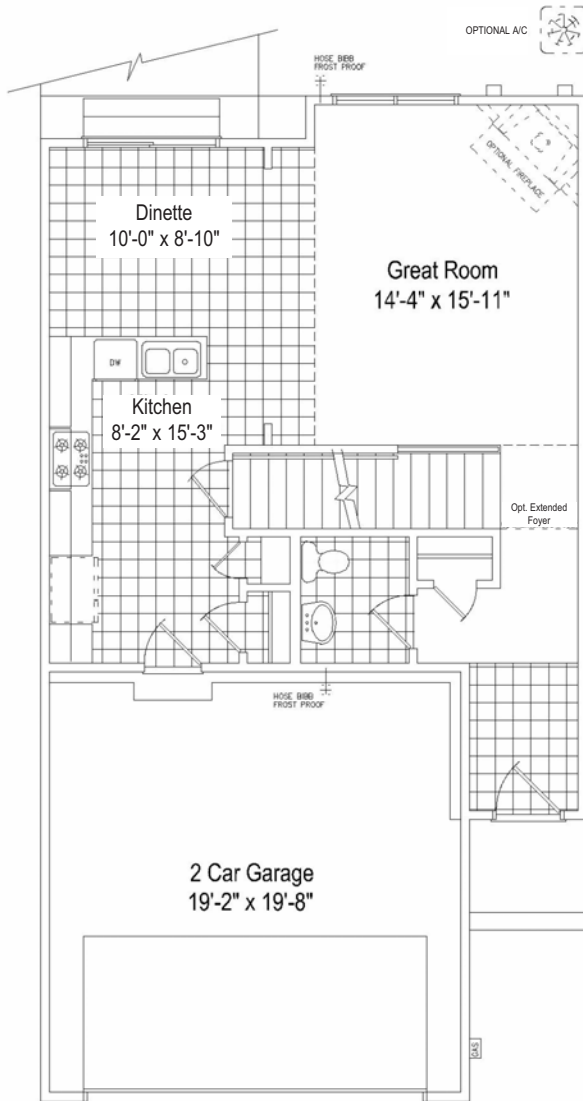


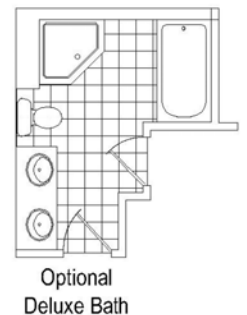
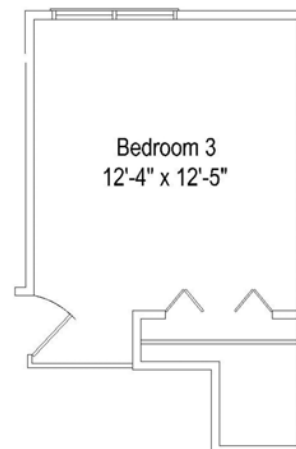
Caitlin

This charming lovely offers 1,508 total square feet. The expansive 2 story great room adds drama to the main level. The original kitchen layout can be enhanced with a breakfast bar. This home includes a fabulous front room master suite, a generous second bedroom and full bath, a second floor laundry room, and the flexibility to add a loft or third bedroom.



First floor plan reflects a basement condition

- 1,508 square feet
- 2 bedroom 2.5 bath
- Optional third bedroom
- Optional loft
- Optional deluxe master bath



Caitlin

Please visit www.gallagher-homes.com for more information on the Style & Value of Gallagher Homes and the Tramore community.

